



Partnership for  
Public Health

# 2020 ANNUAL REPORT DATA

“

*In light of the Covid-19 pandemic, PPH remained focused on public health efforts and continues to work with partners to keep our community as healthy and safe as possible.*

”

FISCAL YEAR JULY 2019-JUNE 2020



## SCHOOL BASED IMMUNIZATION DATA

- 17** K-12 schools in the region participated out of 37 schools, including private schools
- 803** Students vaccinated
- 269** Of the students vaccinated are Medicaid Beneficiaries

- 34%** Of the students vaccinated are Medicaid Beneficiaries
- 46%** Of the schools in the region participated. An increase of 8% compared to FY19
- 14.7%** Of participating schools' population vaccinated

## ORAL HEALTH EDUCATION

As of August 2020, **790** children received oral health education along with a "goodie bag" including a toothbrush and toothpaste.



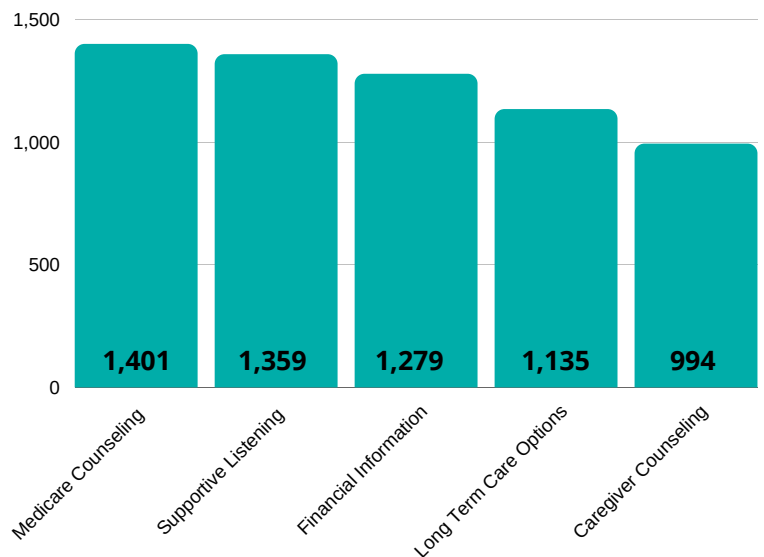
## SERVICELINK

**ServiceLink, your local Aging and Disability Resource Center** provides free, unbiased, up-to-date information and assistance helping individuals and families make informed choices about health care and other services for older adults and people with disabilities. ServiceLink serves all individuals regardless of age, income or needs. We remain a true gem.

While all our programs are essential - With our aging communities - Medicare counseling is most desired.

“ **Total ServiceLink contacts OVER 10,000 INTERACTIONS in Belknap and Carroll Counties** ”

### TOTAL SERVICELINK CONTACTS PER PROGRAM





## SUBSTANCE MISUSE

The City of Franklin made substantial efforts:

- A city wide ban on Kratom
- Passing of the Tobacco 21 Ordinance
- Innovative school vaping policy
- Youth driven PSA on vaping
  - **View the PSA here:**  
[www.facebook.com/FMDTF/videos/2535645573391455/](http://www.facebook.com/FMDTF/videos/2535645573391455/)



## SUICIDE PREVENTION

- A postvention training for school staff
- Community film screening and discussion forum (See Picture)
- Gilford High School student presented at the 2019 NH Behavioral Health Summit.

## COMMUNITY HEALTH SERVICES NETWORK, LLC/ IDN 5

- CHSN (IDN5) DSRP funded care coordinators served 1,825 patients last year.
- Care coordinators had 4,863 contacts with patients last year.
- The top three needs of patients were: financial assistance/benefits assistance, physical health, and housing last year.

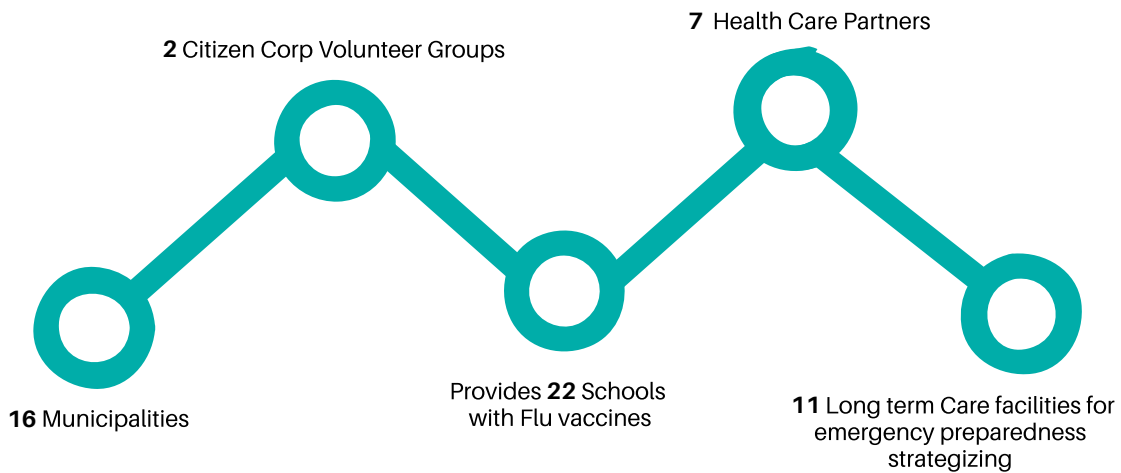
Location	Enrollments
LRGH	458
Mid-State Health Center (Plymouth)	398
Franklin Regional Hospital	272
Speare Memorial Hospital	224
HealthFirst Family Care Center (Franklin)	192
Riverbend Community Mental Health Center	80
LRMHC (Laconia)	79
Service Link (Belknap County)	38
HealthFirst Family Care Center (Laconia)	30
Westside Healthcare	25
Pemi-Baker Community Health	22
LRMHC (Plymouth)	7
<b>Total</b>	<b>1825</b>

Location	Encounters
HealthFirst Family Care Center (Franklin)	959
Mid-State Health Center (Plymouth)	723
LRMHC (Laconia)	650
Riverbend Community Mental Health Center	540
LRGH	484
Franklin Regional Hospital	433
HealthFirst Family Care Center (Laconia)	416
Speare Memorial Hospital	357
Service Link (Belknap County)	126
Westside Healthcare	96
Pemi-Baker Community Health	40
LRMHC (Plymouth)	39
<b>Total</b>	<b>4863</b>

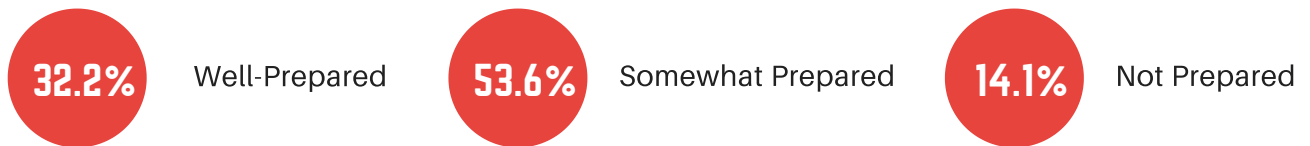


# EMERGENCY PREPAREDNESS IN WINNIPESAUKEE PUBLIC HEALTH REGION

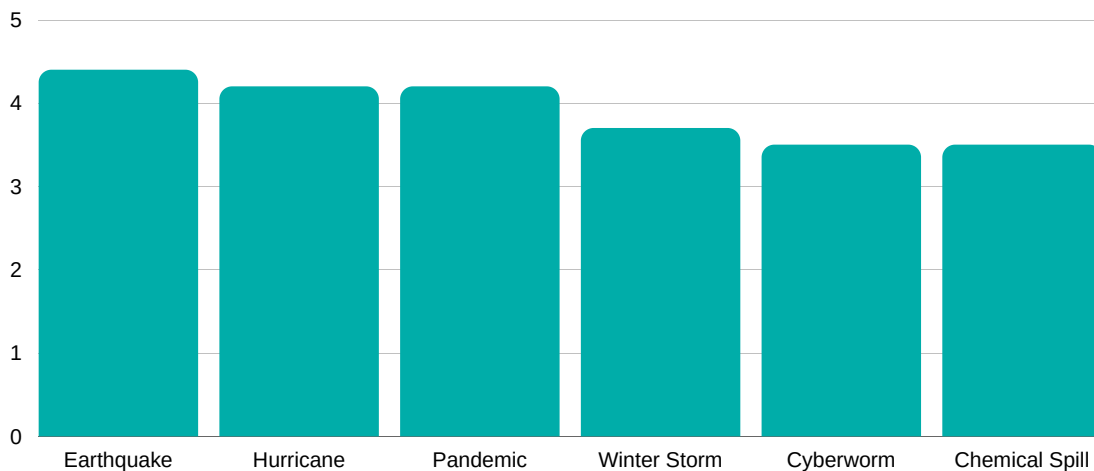
**COUNTLESS HOURS HAVE BEEN SPENT CONNECTING WITH PARTNERS IN RESPONSE TO THE COVID-19 PANDEMIC**



## HOW WELL NEW HAMPSHIRE RESIDENTS FEEL THEY ARE PREPARED FOR A LARGE SCALE DISASTER OR EMERGENCY (PRE-PANDEMIC)



## IMPACT OF EACH HAZARD SCENARIO ON HEALTH CARE, BEHAVIORAL HEALTH, AND PUBLIC HEALTH SYSTEMS IN THE WINNIPESAUKEE PUBLIC HEALTH REGION





# FY2020 FINANCIAL SNAPSHOTS

